



## A Level English Literature at Southborough Sixth Form

### A Level Course Outline (AQA Literature A 7712)

- **Paper 1: Love through the Ages**

**40% of A Level. 75 marks**

**3 hours written exam (open book section c only)**

Section A: Shakespeare: one passage-based question with linked essay (25 marks)

Section B: Unseen poetry: compulsory essay question on two unseen poems (25 marks)

Section C: Comparing texts: one essay question linking two texts (25 marks)

- **Paper 2: Texts in shared contexts**

**40% of A Level. 75 marks**

**2 hour 30mins written exam (open book)**

Section A: Set texts. One essay question on set text (25 marks)

Section B: Contextual linking:

one compulsory question on an unseen extract (25 marks)

one essay question linking two texts (25 marks)

### **Independent Critical Study (2 texts, one pre-1900.)**

**20% of A Level. 50 marks**

Comparative critical study of two texts, at least one of which must have been written pre-1900

One extended essay (2500 words) and a bibliography

# English Literature

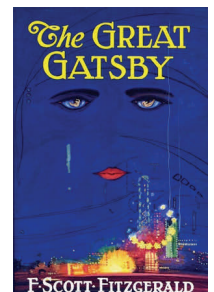
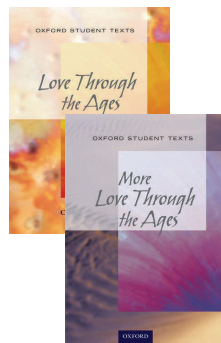
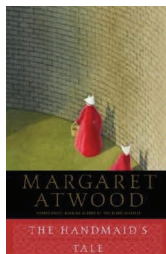
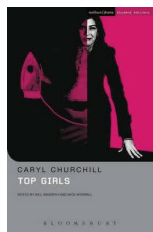
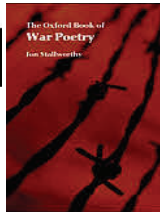
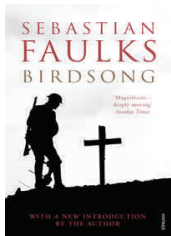
## Course entry requirements:

Due to the demands of the A level course, there is a minimum requirement that students gain at least a grade 6 in English Language and English Literature.

## English Literature Course Codes:

### Course offered:

AQA A Level English Literature A  
Course code: 7712



## Useful websites for more information:

AQA Exam board Specification:

<http://www.aqa.org.uk/subjects/english/as-and-a-level/english-literature-a-7711-7712/specification-at-a-glance>

Literary Connections website, a useful overview of the specification with recommended reading and useful links:

- <http://www.literaryconnections.co.uk/resources/aqalita.html>